

Transaflow®

Contrast media application

Multi-Patient Syringe Systems for High Performances in the CT and MRI

- ✓ Syringes
- ✓ Multi-patient filling systems
- ✓ Patient lines

 **Transatlantic**
Products for a healthier world

Safety and Hygiene in Radiology

Our Transaflow Multi-Patient Syringe System optimizes routines in the contrast media application. The system is hygienically safe, from the syringe through the Multi-APS Filling System to the patient line with pathogen barrier – for up to 24 hours..

The certified multiple use syringes and Multi-APS Filling Systems enable users to save both resources and time during their CT and MRI processes. Only the patient line must be exchanged for each new patient. A further benefit is the special drip and sticking stop of the Multi-APS, which allows a highly hygienic application of the filling system.

Both the syringes and the Multi-APS Filling Systems are compatible with all commercially available syringe injector

Quality Made in Germany

Our proven Multi-APS Filling Systems and patient lines were developed with users more than 10 years ago. Today we are still in close contact with radiologists in order to develop the system further in line with the demands of radiographers and radiologists. Transaflow Filling Systems and patient lines are cleanroom manufactured in Germany.



Produced in cleanroom production in Germany



Pathogen barrier in each patient line



Non-drip, non-stick



Ease of handling



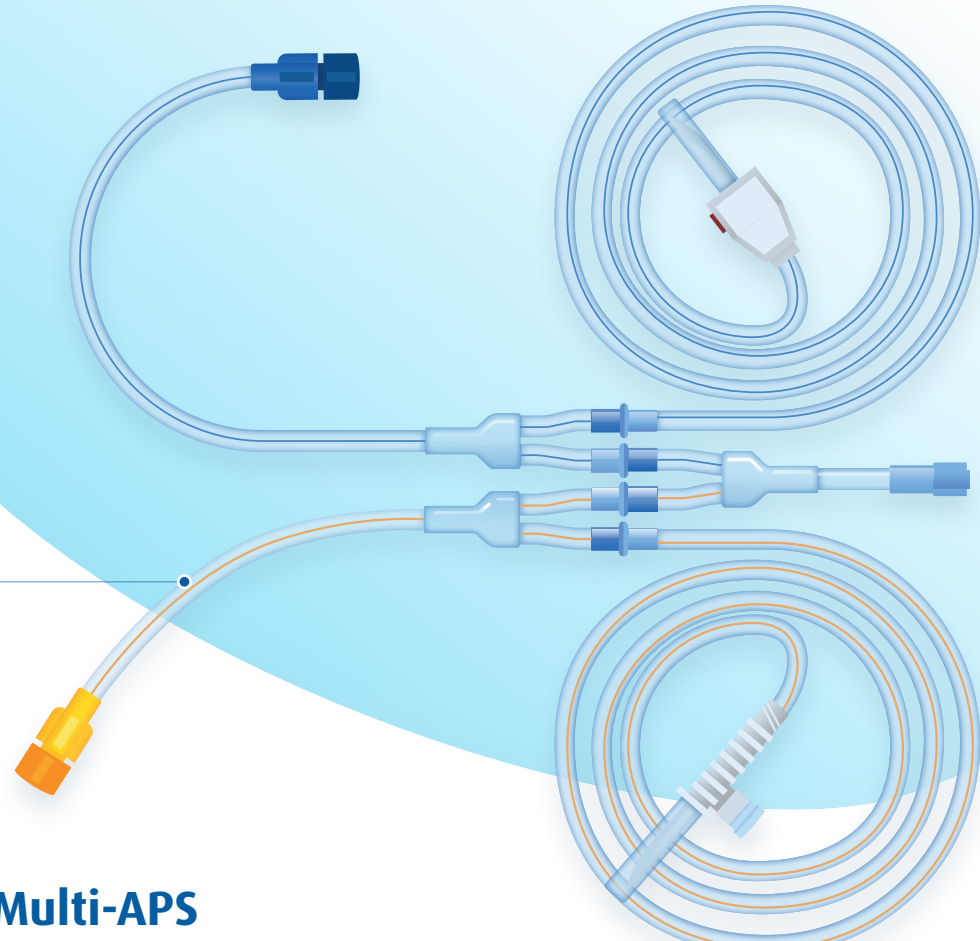
Up to 12 hr application period



Cost-reducing

About Transatlantic

Reliable cooperation is built on trust. For that reason, you need a partner you can trust. At Transatlantic, we have advised and supported our customers for over 85 years, and our mission is to create better individualized, more humane and efficient medical care for the benefit of patients and users. You will experience competent support and advice by our qualified medical product advisors when selecting products appropriate for you.



Transaflow® 12
hr DUAL Multi-
APS 23

Item no. 2590323

Transaflow Multi-APS

Our Multi-APS Filling Systems are suitable for multiple use both with the CT and the MRI. They are compatible with all commonly used syringe injectors and, depending on the type of syringe injector, (mono or dual injectors) and the individual requirement.

Can be administered with or without saline solution.

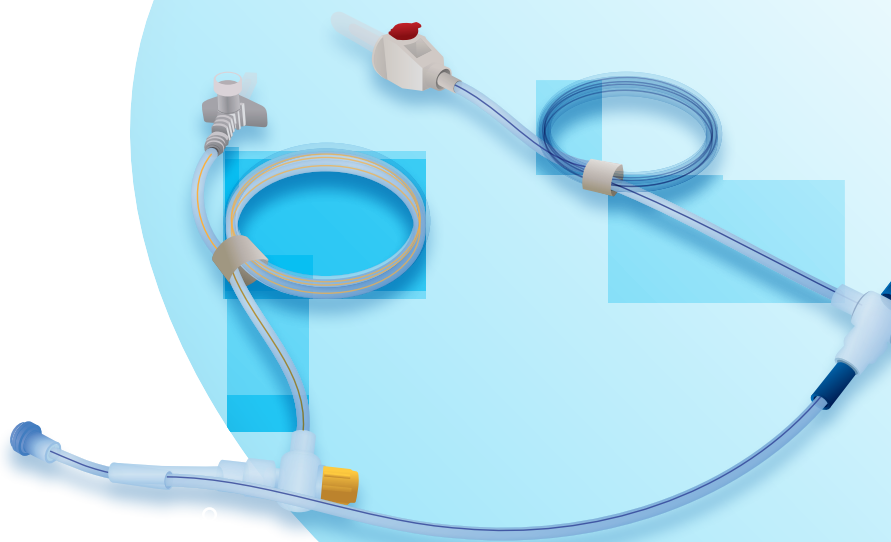
Overview of the benefits:

- ✓ PHT / DEHP and not made with natural rubber latex
- ✓ Certified by German Society for Hospital
- ✓ Hygiene (DGKH)
- ✓ Quality "Made in Germany"
- ✓ Multiple application up to 12/24 hr
- ✓ Closed system
- ✓ Highest hygienic safety
- ✓ Non-drip, non-clog
- ✓ Additional variants, e.g., for scan bags or prefilled pressure syringe injectors available on request



Maximum
application period

12 or 24 hours



Patient Lines

Our lines come in different lengths and two variants: straight/PWL and spiraled/PWLS. All Transaflow patient lines have a specially developed pathogen barrier, which safely inhibits bacteria of any kind and prevents bacterial and viral contamination. Due to the color coding, the Transaflow PWL/PWLS can be connected to the Transaflow Multi-APS Safety Filling Systems with no risk of confusion.

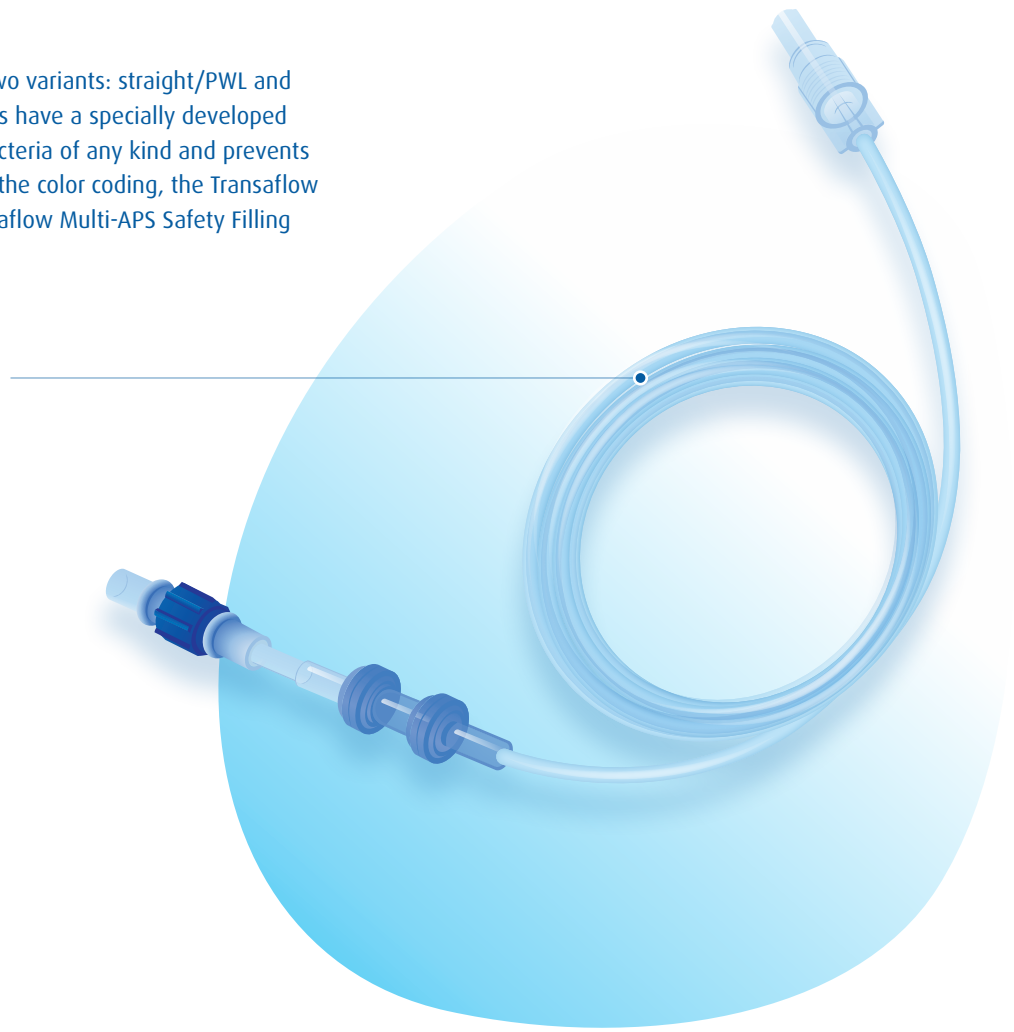
Patient line - straight with Dual pathogen barrier

Transaflow PWL-15
150 cm - straight
Item no. 2580436

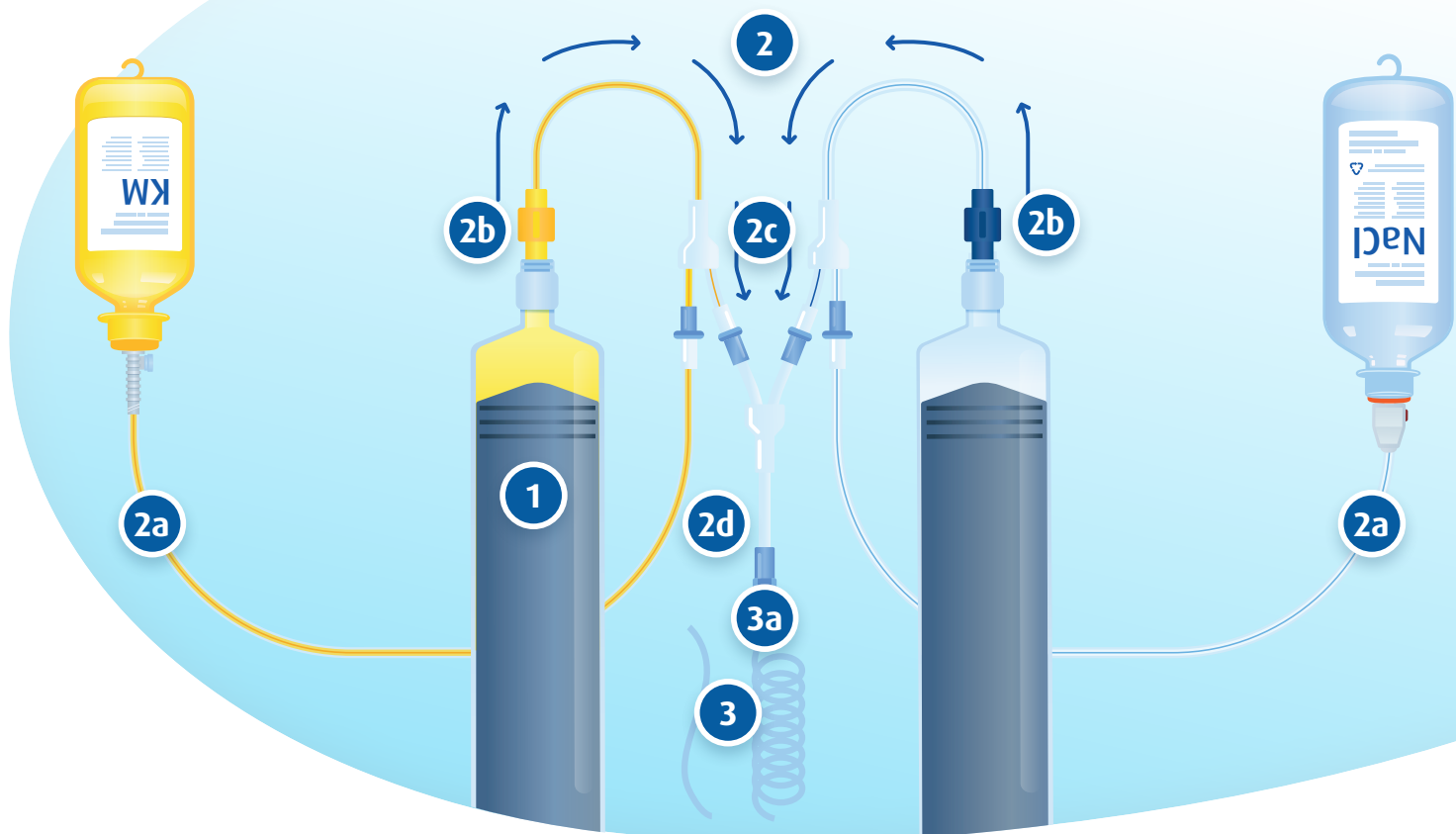
Transaflow PWL-20
200 cm - straight
Item no. 2580424

Transaflow PWL
250 cm - straight
Item no. 2580501

Transaflow PWL
300 cm - straight
Item no. 2580500



Maximum application period
Change line between patients



Standardization of the Radiology Routine

The Multi-Patient Syringe System is comprised of our 12 hour Transaflow® Multi-APS Contrast Media Filling System and the appropriate 12- or 24-hour injector syringe. The closed system is complemented by our Transaflow® PWL and PWLS patient lines in the desired length. The Multi-Patient Syringe System is suitable for multiple application* both in CT and MRI. Transaflow® offers all the benefits of a design based on a closed system – it is sealed, and does not drip or clog.

- 1 Certified* 12- and 24-hour pressure injector syringes with standard connectors
- 2 Certified, closed 12 Transaflow® Multi-APS Contrast Media Filling System
- 2a Contrast media and saline supply line available with different connectors
- 2b Standard connectors on the syringes with color coding (yellow = contrast media, blue = saline)
- 2c Four high-quality check valves
- 2d Self-closing Luer-lock adapter with homogeneous surface for easy disinfection
- 3 Patient line in various lengths, straight or spiraled
- 3a Secure pathogen barrier to prevent contamination of the system

* Users should read the medical device instructions for use before use in order to ensure proper application. They are available on request.

* Inspected and tested by DGKH e.V



RESOURCE-SAVING

Unmatched usability - applicable for 12 and 24 hours

Our 12- and 24-hour certified systems allow a standardized routine in radiology. Independent of manufacturer, all Transaflow® Multi-APS Systems can be used with syringe injectors both in the CT and the MRI.



CLOSED SYSTEM

Easy to clean - non-drip, non-clog

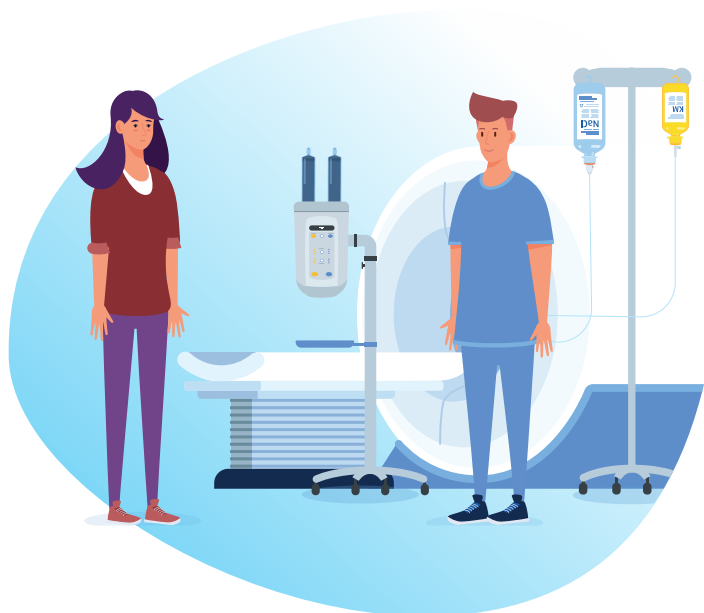
The Transaflow® Multi-APS Safety Filling System together with the appropriate patient line (PWL/PWLS) offers all the benefits of a closed system – it is sealed, and does not drip or clog. Transaflow® Multi-APS Safety Filling Systems are inspected and tested by the German Society for Hospital Hygiene (DGKH).



HYGIENIC AND SAFE

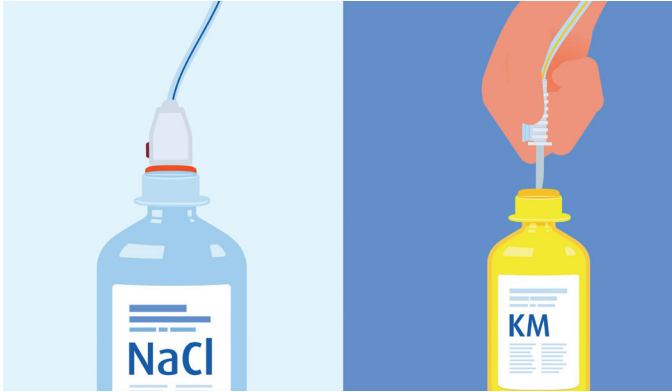
Safe for patients and users

Our unique filling systems are equipped with four high-quality check valves with a self-closing Luer-lock adapter with a disinfectable, homogeneous surface.



Intuitive · Simple · Hygienic

The Transaflow® Multi-Patient Syringe System in application



1. Puncture saline and contrast media containers



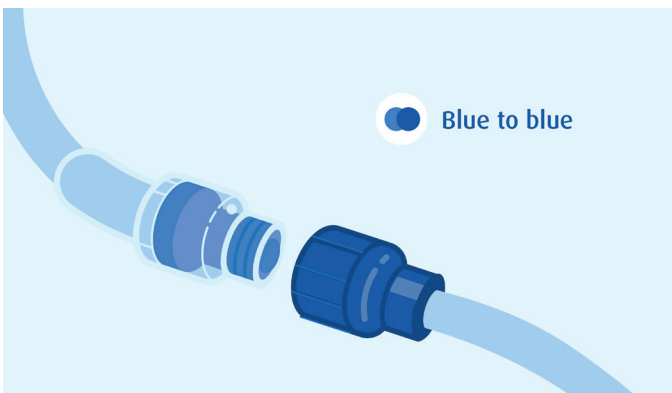
2. Color-coded lines



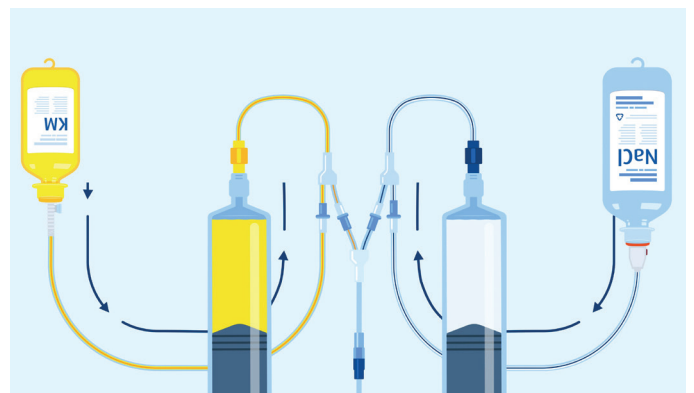
3. Connection to syringes



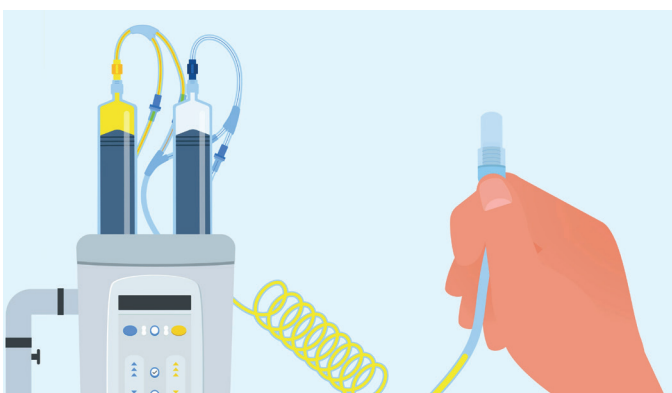
4. Filling of syringes



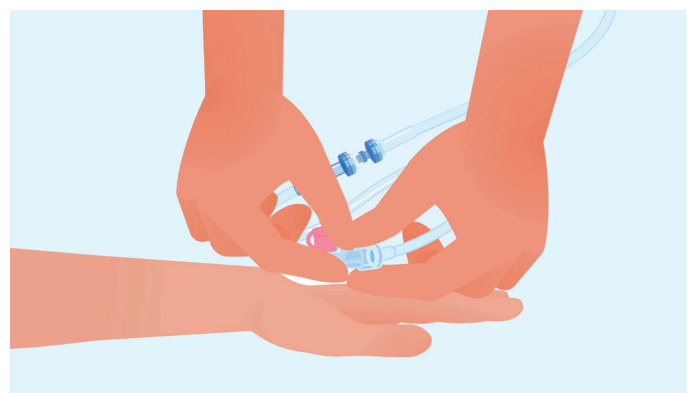
5. Connection of patient line to system



6. Flushing of air from the system



7. Ready-to-use system for the examination



8. Connection of patient line to the patient

Customer interview about the Transaflow® Multi-Patient Systems

Our 12-hour Multi-APS System is being used by approx. 200 satisfied users in German clinics and practices. We spoke with Frank Rudolph about the benefits of Transaflow® Multi-Patient Systems.

Why did you decide on our system and its ease of handling?

FR: "The drip protection in the description drew my attention in particular. The decisive factor for us was also that the system fits all our various injector types."

Why is multi-use up to 12 hours important to you?

FR: "Because we perform a variety of dynamic measurements in our practices and clinics, which usually makes the injector systems necessary throughout the day."

Our 12-hour system consists of 12-hour syringes and a 12-hour CM application system. So, both are certified and multi-use. Which benefits does that offer you?

FR: "It makes us independent of the consumables of the injector manufacturers and at the same time meets the hygiene requirements."

Why do you prefer manufacturer-independent systems for contrast media application?

FR: "They are usually less expensive. Since we are using injectors of various manufacturers, it also simplifies logistics since we need only one application system."

What do you like best about our system?

FR: "That the application system fits with all our various injector types and runs problem-free. Ease of handling."

Our system is closed, and does not drip or clog. It has a self-closing adapter. What exactly does that mean for you? What do you like about it? And what about safety and hygiene?

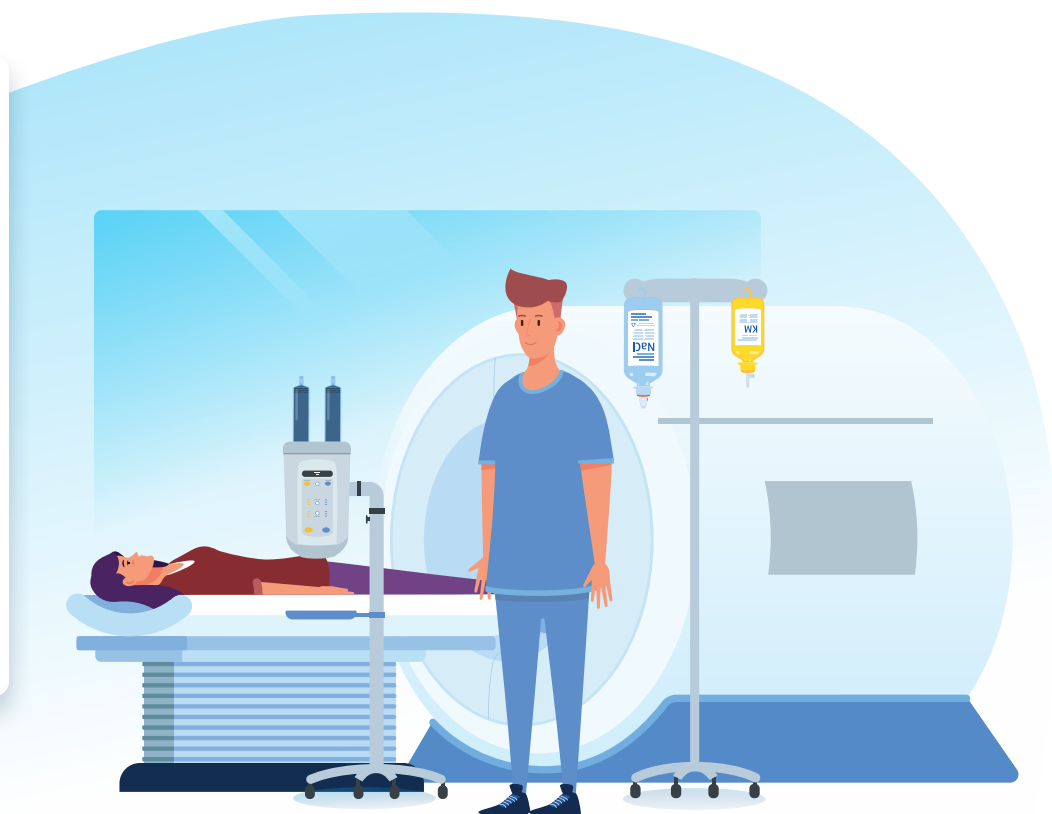
FR: "This helps during clean operations since the non-drip feature works very well. However, one should remember to connect a patient tube during the flushing of air, since the non-drip feature would be destroyed. Everyone knows the sticky floors under the injectors. This is all in the past at the places where Multi-APS Systems are used."

The 12-hour Multi-APS Systems are being manufactured 100% under clean room production conditions in Germany. Has that affected your decision?

FR: "This didn't influence me, but I think it is great. More important is that we can vary the system with tubing lengths according to our wishes. Keyword: distance between syringes. That was an exciting time."

This is how the Transaflow® Multi-APS works:

Our Transaflow® Multi-APS Systems offer you added-value that hardly anyone else can offer. In our explanatory video all of the benefits are explained so they are easy to understand and to the point.



All benefits at a glance: Transaflow® Multi-Patient Syringe Systems

Our Multi-APS and patient lines are manufactured in Germany under clean room production conditions. Each product is assembled manually using the latest technology. In addition, most of the individual components are procured locally.



Resource-saving

Less waste due to longer shelf life.



Cost-reducing

Less costs because of multiple use.



Made in Germany

Produced under clean room production conditions.



Microbiology expert report

Inspected by Technische Universität Dresden.



DGKH certificate

Surveyed and tested by the German Society for Hospital Hygiene (DGKH).



Time-saving

Time-saving due to easy exchange of patient line.



Hygienic and safe

Secure pathogen barrier in each patient line.



Non- drip or -clog

With special drip and clog stop.



Easy to use

Easy handling due to color-coded tubes.



“Everyone knows the sticky floors under the injectors. This is all in the past at the places where Transaflow Multi-APS Systems are used.”

Frank Rudolph, Radiographer

Our promise of quality to you

User-safety is the top priority for us. As manufacturer and distributor of medical devices, we have been inspected and are certified according to DIN EN ISO 9001 and DIN EN ISO 13485. All of our Medical Devices are CE-marked according to the Medical Device Regulation (MDR). Additionally the Multi-PAS filling systems are certified by the German Society for Hospital Hygiene (DGKH). By placing the systems on the market as medical devices, we guarantee that our products fulfill the essential safety requirements and the prescribed compliance procedures were performed. Thus, our products also fulfill the requirements of the Medical Device Law Implementation Act and the Medical Devices User Notification and Information Ordinance.



Transatlantic
Handelsgesellschaft
Stolpe & Co. mbH

Siemensstraße 21-23
61267 Neu-Anspach

Tel: 06081 943050
Fax: 06081 943080

Email: info@transat.de
www.transatlantic.de